

ACTIVE INGREDIENTS



Aloe Vera (Aloe barbadensis extract): moisturising, regenerating, anti-ageing power.



Ginseng extract (Panax Ginseng root extract): revitalising, toning and microcirculation-stimulating action.



Sunflower oil (Helianthus annuus (sunflower) seed oil): With its high content of polyunsaturated fatty acids (linoleic and linolenic) it provides a nourishing, moisturising and protective action.



Vitamin E (Tocopherol): acts as a moisturiser and emollient, antioxidant and protects against UV damage; helps prevent premature ageing.



NMF: mixture of sugars, amino acids and provitamin B5. It is used to integrate the natural NMF (Natural Moisturising Factor), all the substances to maintain an optimal level of hydration.

cleanmilk

GENTLE CLEANSER

Soft cleansing milk, removes make-up and impurities effectively and gently, leaving the skin soft, nourished and moisturised. Formulated with Aloe, Ginseng and natural moisturising factor (NMF). Recommended for all types of skin.



Cabin - Apply to the face and massage with circular movements. Remove with lukewarm water or a dampened sponge. Continue with the **tonelotion**, gently dabbing the face with a sponge, cotton pad or synthetic skin. Distribute evenly and focus on reddened areas. Can be used before the serum and after the scrub.



At Home - At home, use **cleanmilk** and **tonelotion** for cleansing your face daily.
IMPORTANT: to cleanse properly, always use the cleansing milk (**cleanmilk**) and then the toner (**cleantone**)

CLEANSING STEPS



- | | | |
|--|-------------------------------------|---|
| 1 clean milk
Gentle cleanser | 2 scrub off
Scrub | 3 tonel otion
Gentle toner |
| 4 sens serum
Calming serum | 5 sens mask
Soothing mask | 6 age cream
Anti-ageing cream |

o'care
MILANO

Code **OC.DET.001P**
500ml Net Wt.16.9 oz



Code **OC.DET.002R**
200ml Net Wt.6.8 oz

**CLEANSING
LINE**
Keep the skin clean



ACTIVE INGREDIENTS



Aloe Vera (Aloe barbadensis extract): moisturising, regenerating, anti-ageing power.



Ginseng extract (Panax Ginseng root extract): revitalising, toning and microcirculation-stimulating action.



Wheat protein (hydrolysed wheat protein): Used on the skin, it has a moisturising, softening and anti-ageing effect.



Hyaluronic Acid: It provides an intense hydrating action. Leaves skin smooth, soft and firm. Helps to fight the signs of ageing.



NMF: mixture of sugars, amino acids and provitamin B5. Used to integrate natural NMF (Natural Moisturising Factor): all the substances required to maintain an optimal level of hydration.

tonelotion

GENTLE TONER

Toning lotion that keeps the skin protected and brings it back to its optimal balance. Has an extraordinary softening and moisturising effect that increases its elasticity. Recommended morning and evening after cleansing to provide toning and balance. Makes the skin more receptive to subsequent treatments. Made with Aloe, Ginseng and Natural Moisture Factor (NMF). Alcohol-free.



Cabin - Soak a cotton pad, plant-based skin pad or sponge and gently wipe over the entire face after cleansing with **cleanmilk** to promote absorption and toning. Carry out before each aesthetic treatment.



At Home - At home, use **cleanmilk** and **tonelotion** for cleansing your face daily. **IMPORTANT:** to cleanse properly, always use the cleansing milk (**cleanmilk**) and then the toner (**cleantone**).

CLEANSING STEPS



- | | | | | | |
|---|-------------------------------------|---|----------------------------------|---|--------------------------------------|
| 1 | cleanmilk
Gentle cleanser | 2 | scruboff
Scrub | 3 | tonelotion
Gentle toner |
| 4 | sensserum
Calming serum | 5 | sensmask
Soothing mask | 6 | agecream
Anti-ageing cream |

o'care
MILANO

Code **OC.DET.003P**
500ml Net Wt.16.9 oz

Code **OC.DET.004R**
200ml Net Wt.6.8 oz



**CLEANSING
LINE**
Keep the skin clean



ACTIVE INGREDIENTS



Aloe Vera (Aloe barbadensis extract): moisturising, regenerating, anti-ageing power.



Witch hazel (Hamamelis virginiana (Witch hazel) leaf extract): Carries out a soothing, astringent action that stimulates micro-circulation.



Calendula (Calendula officinalis flower extract): Anti-inflammatory, soothing, hydrating and nourishing activity.



Vitamin E (Tocopherol): Performs an anti-oxidant action, protecting the skin from ageing caused by the formation of free radicals.



Rice starch (Oryza sativa (Rice) bran oil): Soothing, hydrating, smoothing and nourishing action.



Shea butter (Butyrospermum parkii (Shea) butter): Shea butter has many properties. It has excellent anti-inflammatory properties and stimulates the production of collagen. It contains phytosterols and vitamins for an intensive soothing and nutrient effect.



Vegetable granules of Almonds and Hazelnuts: Product obtained from the shelling of nuts such as hazelnuts and almonds. The product obtained is ground in such a way as to produce the desired particle size and ensure a gentle exfoliating action of the skin by increasing the absorption of the active ingredients contained.



Rice Bran Oil: excellent for sensitive skin, thanks to its moisturizing and soothing properties. Contains phytic acid, a B-complex vitamin that is believed to stimulate circulation and cell growth.



Sunflower Oil: with a high content of polyunsaturated fatty acids (linoleic and linolenic), it has a nourishing, emollient and protective

scruboff

SCRUB

A compact and creamy butter, gently exfoliates thanks to the presence of plant-based granules, removing dead cells and giving the skin a healthier and brighter look



Cabin - Apply gently by massaging over the face in small circles. Pay attention to delicate skin and, in this case, apply the product on damp skin. Remove with a warm cloth



At home - A buttery, gentle product to apply weekly and, on delicate skin, every two weeks. Massage it gently into normal skin, even when dry and, for delicate skin, massage into moistened skin. Remove with a warm cloth.

CLEANSING STEPS



- | | | | | | |
|---|------------------------------|---|---------------------------|---|-------------------------------|
| 1 | cleanmilk
Gentle cleanser | 2 | scruboff
Scrub | 3 | tonelotion
Gentle toner |
| 4 | sensserum
Calming serum | 5 | sensmask
Soothing mask | 6 | agecream
Anti-ageing cream |

o'care
MILANO

Code **OC.DET.005P**
500ml Net Wt.16.9 oz

Code **OC.DET.006R**
200ml Net Wt.6.8 oz



CLEANSING
LINE

Keep the skin clean



ACTIVE INGREDIENTS



Butcher's Broom (Ruscus aculeatus root extract): It has vasoconstrictive properties, protecting the capillaries. Indicated for sensitive and couperose skin and for the treatment of periocular bags and dark circles



Centella Asiatica (Centella asiatica leaf extract): improves the functionality of the microcirculation and skin elasticity, has an elasticizing, toning and healing action.



Calendula (Calendula officinalis flower extract): Has an anti-inflammatory, soothing, moisturising and nourishing action.



Horse chestnut (Aesculus hippocastanum (Horse chestnut) seed extract): Invigorating properties on blood vessel walls and for blood circulation.



Hydrolysed yeast protein: a skin conditioning agent used in cosmetics and beauty products due to its ability to act against oxidative stress and improve skin conditions.



Acetyl Tetrapeptide-15: Reduces the nervous responses to external stimuli (accentuated in sensitive skins). Increases the tolerance threshold of the skin.



High molecular weight Hyaluronic Acid: Has a soothing, healing, moisturising and anti-inflammatory effect on the surface of the skin.



Pro-Vitamin B5 (Panthenol): Panthenol is a precursor of vitamin B (pro vitamin B5). Due to its high compatibility, it improves the barrier function of the skin, improves its elasticity and keeps it soft. It helps to improve hydration, decrease roughness and indirectly reduce irritation. Once the barrier function of the skin is restored, it limits the penetration of potentially irritating agents.



Allantoin: it has a soothing and astringent action, and stimulates microcirculation. It also facilitates the synthesis of collagen, which gives the skin a youthful appearance.

sensserum

SOOTHING AND CALMING SERUM

Serum rich in emollient, soothing and softening substances. Restores uniformity, elasticity and softness to the skin. Also suitable for the most sensitive skin thanks to the calming and protective active ingredients.



Cabin - Apply to face after cleansing and massage until fully absorbed.



At home - Apply **senscream** in the morning and evening and **sensserum** for an intensive effect

SENSITIVE SKIN STEPS



1 **cleanmilk**
Gentle cleanser

2 **scruboff**
Scrub

3 **tonelotion**
Gentle toner

4 **sensserum**
Calming serum

5 **sensmask**
Soothing mask

6 **senscream**
Soothing cream

O'care
MILANO

Code **OC.SENS.001RP**
30ml Net Wt.1.0 oz



**SENSITIVE
LINE**
for sensitive skin



ACTIVE INGREDIENTS



Horse chestnut (Aesculus hippocastanum (Horse chestnut) seed extract): Has a redness-reducing, soothing, strengthening and vasoprotective action. Improves the microcirculation of the skin.



Red Grape Extract (Vitis vinifera (grape) fruit extract): Has antioxidant and anti-ageing properties. Has a vasoprotective action by decreasing capillary permeability and increasing the resistance of the vessel walls.



Aloe Vera extract (Aloe barbadensis extract): Has a moisturising, anti-inflammatory and nourishing action.



Pro-Vitamin B5 (Panthenol): Panthenol is a precursor of vitamin B (pro vitamin B5). Due to its high compatibility, it improves the barrier function of the skin, improves its elasticity and keeps it soft. It helps to improve hydration, decrease roughness and indirectly reduce irritation. Once the barrier function of the skin is restored, it limits the penetration of potentially irritating agents.

sensmask

SOOTHING MASK

Gel mask, rich in emollient, soothing and softening substances. Restores uniformity, elasticity and softness to the skin.



Cabin - Apply a thin layer evenly to the face and décolleté. Leave on for at least 15 minutes and then remove gently with cool or lukewarm water. Always combine **lightcream** after **sensserum** or any specific serum. Can be used after any specific treatment in the spa once a week.



At home - Apply **senscream** in the morning and evening and **sensserum** for an intensive effect

SENSITIVE SKIN STEPS



- | | | | | | |
|---|-------------------------------------|---|----------------------------------|---|------------------------------------|
| 1 | cleanmilk
Gentle cleanser | 2 | scruboff
Scrub | 3 | tonelotion
Gentle toner |
| 4 | sensserum
Calming serum | 5 | sensmask
Soothing mask | 6 | senscream
Soothing cream |

o'care
MILANO

Code **OC.SENS.002P**
200ml Net Wt.6.8 oz



**SENSITIVE
LINE**
for sensitive skin

ACTIVE INGREDIENTS



Plant Native Cells derived from a rare variety of Swiss apple (Malus domestica fruit cell culture extract): Provide important substances and improve the vitality and health of human stem cells. These native cells protect against UV rays and retain the youthful appearance of the skin.



Shea butter (Butyrospermum parkii (Shea) butter): Shea butter has many properties. It has excellent anti-inflammatory properties and stimulates the production of collagen. It contains phytosterols and vitamins for an intensive soothing and nutrient effect.



Black sesame (Sesamum indicum (Sesame) seed oil): High content of polyunsaturated fatty acids (linoleic and linolenic) it provides a soothing and repairing action.



Horse chestnut (Aesculus hippocastanum (Horse chestnut) seed extract): Has a redness-reducing, soothing, strengthening and vasoprotective action. Improves the microcirculation of the skin.



Chamomile (Chamomilla recutita (Matricaria) extract): Used for its soothing effect on the skin and its antiseptic properties. Specifically composed of bisabolol which helps soften the skin.



Sunflower oil (Helianthus annuus (sunflower) seed oil): With its high content of polyunsaturated fatty acids (linoleic and linolenic) it provides a nourishing, moisturising and protective action.



Hyaluronic Acid: It provides an intense hydrating action. Leaves skin smooth, soft and firm. Helps fight the signs of ageing.



Acetyltetrapeptide-15: Reduces the nervous responses to external stimuli (accentuated in sensitive skins). Increases the tolerance threshold of the skin.



Vitamin E: has an antioxidant action, protecting the skin from skin aging due to the formation of free radicals



Solar filter: latest generation solar filter to protect the skin from the aggressiveness of UVA and UVB rays

senscream

SOOTHING MOISTURIZING CREAM, ANTIOXIDANT FOR SENSITIVE SKIN

Creamy and light emulsion with a strong moisturizing action and rich in emollient, soothing and softening substances.

Returns uniformity, elasticity and softness to the skin while respecting the most sensitive skin.



Cabin - Apply to face after a deep cleansing and massage until fully absorbed.



At home - Apply **senscream** in the morning and evening in combination with **sensserum**, also as a make-up base.

SENSITIVE SKIN STEPS



- | | | | | | |
|---|-------------------------------------|---|----------------------------------|---|------------------------------------|
| 1 | cleanmilk
Gentle cleanser | 2 | scruboff
Scrub | 3 | tonelotion
Gentle toner |
| 4 | sensserum
Calming serum | 5 | sensmask
Soothing mask | 6 | senscream
Soothing cream |

o'care
MILANO

Code **OC.SENS.003P**
200ml Net Wt.6.8 oz

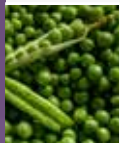


Code **OC.SENS.004R**
50ml Net Wt.1.7 oz

**SENSITIVE
LINE**
for sensitive skin



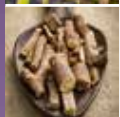
ACTIVE INGREDIENTS



Pea extract (Pisum sativum (Pea) extract): this is a powerful ally for the skin as it lightens existing spots and prevents their appearance by inhibiting the maturation of melanosomes by reducing the expression of the PMEL-17 gene involved in melanin production.



Bearberry (Arctostaphylos uva ursi leaf extract): Has a brightening action due to the competition of arbutin, which it contains, for the binding with the receptors of the enzyme tyrosinase, responsible for the formation of melanin.



Liquorice (Glycyrrhiza glabra (Licorice) root extract): Contains glabridin, which creates a lightening effect on the skin by inhibiting the activity of tyrosinase, an enzyme responsible for the production of melanin.



Stabilised Vitamin C micro lipids (Sodium ascorbyl phosphate): Inhibits melanogenesis, protects from phototoxicity and stimulates the synthesis of collagen. In micro lipid form, it has a structure similar to cell membranes, extends its bioavailability and has a better absorption on the skin.

lightserum

ILLUMINATING BRIGHTENING SERUM

Has an anti-oxidant and moisturising action. Contributes to improving the unsightly appearance of the spots, leaving the skin clear and bright.



Cabin - Apply the serum to neck and décolleté (if necessary) and massage in until absorbed.

To make the skin even softer and brighter apply a veil of **lightcream**. Can be used after any specific treatment.



At home - Use **lightserum** to maintain the brightening and illuminating effect. Daily application is recommended. Can be applied to hands.

STEPS FOR BLEMISHED SKIN



- | | | | | | |
|---|--|---|--------------------------------------|---|--|
| 1 | cleanmilk
Gentle cleanser | 2 | scruboff
Scrub | 3 | tonelotion
Gentle toner |
| 4 | lightserum
Brightening serum | 5 | lightmask
Brightening Mask | 6 | lightcream
Brightening cream |

o'care
MILANO

Code **OC.PRO.001RP**
30ml Net Wt.1.0 oz



LIGHTENING LINE

illuminated skin



ACTIVE INGREDIENTS



Liquorice (Glycyrrhiza glabra (Licorice) root extract): Contains glabridin, which creates a brightening effect on the skin by inhibiting the activity of tyrosinase, the enzyme responsible for melanin production.



Kaolin: White clay boasts brightening properties and is very gentle. Its use is suitable for everyone for smooth, healthy and glowing skin.



Sunflower oil (Helianthus annuus (sunflower) seed oil): With its high content of polyunsaturated fatty acids (linoleic and linolenic) it provides a nourishing, moisturising and protective action.



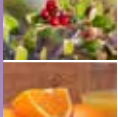
Rice Starch (Oryza sativa (Rice)): Soothing, hydrating, smoothing and nourishing action.



Synergy of alpha-hydroxy-acids with NMF hydrating agents (oligosaccharides and urea): (glycolic acid, lactic acid, malic acid, tartaric acid). They intervene in the renewal processes of the horny layer accelerating the cellular turnover with resulting increase in the vital layers of the skin. They increase the brightness of the skin, improve the hydration and the elasticity of the horny layer.



Bearberry extract (Arctostaphylos uva ursi leaf extract): Has a brightening action due to the competition of arbutin, which it contains, for the binding with the receptors of the enzyme tyrosinase, responsible for the formation of melanin.



Stabilized Vitamin C micro lipids: have an inhibiting effect on melanogenesis, protect against phototoxicity and stimulate collagen synthesis. They carry out an enlightening action. In the form of microlipid it has a structure similar to cell membranes, it prolongs its bioavailability and has a better absorption on the skin.



lightmask

MOISTURISING BRIGHTENING MASK

Soft illuminating mask. Has a nourishing and moisturising action. It contributes to improving the unsightly appearance of the spots leaving the skin clear and bright.



Cabin - Apply a thin layer evenly to the face and décolleté. Leave on for at least 15 minutes and then remove gently with cool or lukewarm water. Preferably match **lightcream** and its specific serum. Can be used after any specific treatment in the spa once a week.



At home - Use **lightserum** to maintain the brightening and illuminating effect.

STEPS FOR BLEMISHED SKIN



- | | | | | | |
|---|--|---|--------------------------------------|---|--|
| 1 | cleanmilk
Gentle cleanser | 2 | scruboff
Scrub | 3 | tonelotion
Gentle toner |
| 4 | lightserum
Brightening serum | 5 | lightmask
Brightening Mask | 6 | lightcream
Brightening cream |

o'care
MILANO

Code **OC.PRO.002P**
200ml Net Wt.6.8 oz

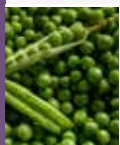


**LIGHTENING
LINE**

illuminated skin



ACTIVE INGREDIENTS



Pea (Pisum sativum (Pea) extract): A powerful ally for the skin as it lightens existing spots and prevents them from appearing, by inhibiting melanosome maturation by reducing the expression of the PMEL-17 gene involved in melanin production.



Plant Native Cells derived from a rare variety of Swiss apple (Malus domestica fruit cell culture extract): Provide important substances and improve the vitality and health of human stem cells. Protect from UV rays and retain the youthful appearance of the skin. Fight premature ageing and preserve the youthfulness of the tissue.



Avocado (Persea gratissima (Avocado) oil): Rich in unsaturated fatty acids and vitamins, revitalising.



Shea butter (Butyrospermum parkii (Shea) butter): Shea butter has many properties. It has excellent anti-inflammatory properties and stimulates the production of collagen. It contains phytosterols and vitamins for an intensive soothing and nutrient effect.



Sunflower oil (Helianthus annuus (sunflower) seed oil): With its high content of polyunsaturated fatty acids (linoleic and linolenic) it provides a nourishing, moisturising and protective action.



Vitamin E (Tocopherol): Performs an anti-oxidant action, protecting the skin from ageing caused by the formation of free radicals.



Synergy of alpha-hydroxy-acids with NMF hydrating agents (oligosaccharides and urea): (glycolic acid, lactic acid, malic acid, tartaric acid). They intervene in the renewal processes of the horny layer accelerating the cellular turnover with resulting increase in the vital layers of the skin. Increase the brightness of the skin, improve the hydration and the elasticity of the horny layer.



Stabilized Vitamin C micro lipids: have an inhibiting effect on melanogenesis, protect against phototoxicity and stimulate collagen synthesis. They carry out an enlightening action. In the form of microlipid it has a structure similar to cell membranes, it prolongs its bioavailability and has a better absorption on the skin.



Solar filter: latest generation solar filter to protect the skin from the aggressiveness of UVA and UVB rays

lightcream

BRIGHTENING CREAM WITH A REVITALISING EFFECT

Soft and fluffy emulsion with an illuminating effect. Has a photo-filtering, nourishing and filmogenic-moisturising action. It contributes to improving the unsightly appearance of the spots leaving the skin clear and bright.



Cabin - Apply to face and décolleté (if necessary) and massage in until fully absorbed. Preferably combine with the specific serum. Can be used after each treatment.



At home - Use *lightserum* to maintain the brightening and illuminating effect.

STEPS FOR BLEMISHED SKIN



- | | | | | | |
|---|--|---|--------------------------------------|---|--|
| 1 | cleanmilk
Gentle cleanser | 2 | scruboff
Scrub | 3 | tonelotion
Gentle toner |
| 4 | lightserum
Brightening serum | 5 | lightmask
Brightening Mask | 6 | lightcream
Brightening cream |

o'care
MILANO

Code **OC.PRO.003P**
200ml Net Wt.6.8 oz



**LIGHTENING
LINE**
illuminated skin



ACTIVE INGREDIENTS



Kaolin: A natural clay that exerts an absorbent action on the excess of superficial lipids, typical of oily skins.



Sage: has antiseptic, astringent and skin-purifying properties. Normalizes sebaceous secretion.



Burdock extract (Arctium lappa root extract): Has a cellular regenerating, astringent and dermopurifying activity.



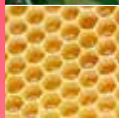
Witch hazel (Hamamelis virginiana (Witch hazel) leaf extract): Carries out a soothing, astringent action that stimulates micro-circulation.



Glycerol caprylate: it has an antibacterial action. Helps fight skin impurities, has a strong activity against Propionibacterium acnes.



Tea tree (Melaleuca alternifolia (Tea tree) leaf oil): Essential oil of Melaleuca (Tea Tree), performs an antiseptic and antimicrobial action.



Propoli: It has anti-inflammatory, antiseptic, healing and vasoprotective properties.



Provitamin B5: performs a moisturizing, soothing, regenerating and nourishing action. It also acts as a barrier against skin irritation and against water loss.



Zinc Oxide: helps regulate excess sebum, eliminating impurities and carrying out an astringent action

balmask

NORMALISING ASTRINGENT MASK

Soft mask that normalises excessive sebaceous secretion. Promotes the elimination of impurities and keeps the hydration of the skin constant. Gives your face a new freshness and splendour.



Cabin - Apply evenly to the face and décolleté (if necessary) in a thin layer. Leave on for at least 10-15 minutes, then remove gently with cool water. Perform treatment with **balmask** once a week in combination with **balcream** at the end of the treatment.



At home - use **balcream** in the 50ml format for personal care, both morning and evening.

STEPS FOR OILY AND/OR ACNE-PRONE SKIN



- | | | | | | |
|---|-------------------------------------|---|-----------------------------------|---|------------------------------------|
| 1 | cleanmilk
Gentle cleanser | 2 | scruboff
Scrub | 3 | tonelotion
Gentle toner |
| 4 | sensserum
Calming serum | 5 | balmask
Astringent mask | 6 | balcream
Purifying cream |

o'care
MILANO

Code **OC.REB.001P**
200ml Net Wt.6,8 oz



**BALANCING
LINE**
the latest solution for oily skin



ACTIVE INGREDIENTS



Kaolin: A natural clay that exerts an absorbent action on the excess of superficial lipids, typical of oily skins.



Laminaria algae extract (Laminaria saccharina extract): Regulates excess oil, soothes inflammation of the pores, and regulates hydration.



Burdock extract (Arctium lappa root extract): Has a cellular regenerating, astringent and dermopurifying activity.



Witch hazel (Hamamelis virginiana (Witch hazel) leaf extract): Carries out a soothing, astringent action that stimulates micro-circulation.



Plant Native Cells derived from a rare variety of Swiss apple (Malus domestica fruit cell culture extract): Provide important substances and improve the vitality and health of human stem cells. Protect from UV rays and retain the youthful appearance of the skin. Fight premature ageing and preserve the youthfulness of the tissue.



Tea tree (Melaleuca alternifolia (Tea tree) leaf oil): Essential oil of Melaleuca (Tea Tree), performs an antiseptic and antimicrobial action.



Bisabolol: It performs an intense soothing, anti-reddening and anti-inflammatory action.



Glyceryl caprylate: It has an antibacterial action. Helps fight skin impurities, has a strong activity against the Propionibacterium acnes.

balcream

BALANCING CREAM FOR OILY SKIN

Light emulsion that normalises excessive sebaceous secretion. Promotes the elimination of impurities and keeps the hydration of the skin constant. Gives your face a new freshness and splendour.



Cabin - Apply *balcream* after the mask or during the specific treatment. *Balcream* can be used daily, useful for mattifying particularly oily skin. It can also be used as a base.



At home - Use *balcream* for personal care. Useful for mattifying particularly oily skins.

STEPS FOR OILY AND/OR ACNE-PRONE SKIN



- | | | | | | |
|---|-------------------------------------|---|-----------------------------------|---|------------------------------------|
| 1 | cleanmilk
Gentle cleanser | 2 | scruboff
Scrub | 3 | tonelotion
Gentle toner |
| 4 | sensserum
Calming serum | 5 | balmask
Astringent mask | 6 | balcream
Purifying cream |

o'care
MILANO

Code **OC.REB.002P**
200ml Net Wt.6.8 oz



Code **OC.REB.003R**
50ml Net Wt.1.7 oz

**BALANCING
LINE**
the latest solution for oily skin



ACTIVE INGREDIENTS



O-Filler: this technology represents a clear step forward in skin rejuvenation. A revolutionary double capsule layer with peptides anchored to its surface that are able to select and target the Fibroblasts (like a GPS device) and release them the active anti-ageing ingredient contained in the capsule. This stimulates the production of hyaluronic acid by working directly on fine wrinkles for a more toned and visibly relaxed skin.



Micro gold particles conjugated to a biotechnological peptide: precious active ingredient that has an exceptional anti-wrinkle, elasticizing and moisturizing action. Results Efficacy Test with application twice a day, for 30 days: Wrinkles -55%, Elasticity: + 41%, Hydration: + 31%



Sea chamomile: Performing active ingredient capable of relaxing on expression lines. It has been tested to stimulate the synthesis of collagen and glycosaminoglycans.



Liposomes of hyaluronic acid: helps to decrease wrinkles giving volume and exerting a moisturizing, smoothing and restructuring action. Gives the skin a younger and more relaxed appearance.



Aloe Vera (Aloe barbadensis extract): moisturising, regenerating, anti-ageing power.



Vitamin E (Tocopherol): acts as a moisturiser and emollient, antioxidant and protects against UV damage; helps prevent premature ageing.

ageserum

SMOOTHING ANTI-AGEING SERUM

It performs an anti-wrinkle action thanks to the presence of peptides conjugated to gold particles, sea chamomile extract and hyaluronic acid liposomes, leaving the skin hydrated, nourished and protected. Liposomes take full advantage of the anti-ageing properties of hyaluronic acid as they promote skin absorption and gradual release, ensuring a prolonged moisturizing action over time.



Cabin - Apply a few drops to the face, neck and décolleté and massage in very gently. Usually apply before the mask.



At home - Product for professional use only.

STEPS FOR MATURE SKIN



- | | | | | | |
|---|-------------------------------------|---|-------------------------------|---|--------------------------------------|
| 1 | cleanmilk
Gentle cleanser | 2 | scruboff
Scrub | 3 | tonelotion
Gentle toner |
| 4 | ageserum
Smoothing serum | 5 | agemask
Toning mask | 6 | agecream
Anti-ageing cream |

o'care
MILANO

Code **OC.AGE.003P**
50ml Net Wt.1.7 oz



**ANTI-AGE
LINE**
Starts at 20 years of age



ACTIVE INGREDIENTS



Multimineral complex: Multi-mineral active chrono energizer (zinc, copper, magnesium synergy) for mature skin. Optimizes cellular respiration to stimulate energy (ATP) and metabolic (DNA proteins) mediators. It inhibits the formation of free radicals.



NMF - Fattore di Idratazione Naturale ricostituito: Reconstituted Natural Hydration Factor: it is composed of a mixture of sugars, amino acids and provitamin B5. It is used to replenish the natural NMF (Natural Moisturizing Factor), which is the set of substances that the skin uses to maintain its optimal level of hydration.



Hyaluronic Acid: performs an intense moisturizing action. Leaves the skin smooth, soft and compact. Helps fight the signs of aging.



Aloe Vera (Aloe barbadensis extract): moisturising, regenerating, anti-ageing power.



Betaglucan: It is able to activate the cells of the immune system stimulating the natural defense and regeneration processes of the skin. Protects from UV rays and moisturizes the skin.



Rice starch (Oryza sativa (Rice)): with an emollient, moisturizing, smoothing and nourishing action.



Vitamin E: it has an antioxidant action, protecting the skin from aging due to the formation of free radicals.



Shea butter (Butyrospermum parkii (Shea) butter): Shea butter has many properties. It has excellent anti-inflammatory properties and stimulates the production of collagen. It contains phytosterols and vitamins for an intensive soothing and nutrient effect.



Rice Bran Oil: excellent for sensitive skin, thanks to its moisturizing and soothing properties. Contains Phytic acid, a vitamin of B complex which is believed to stimulate circulation and cellular growth.

agemask

ANTI-AGEING TONING MASK

Anti-Aging Mask with Hyaluronic Acid and Vitamin E which, thanks to the precious contribution of Shea butter and Aloe, will leave the skin illuminated and compact to the touch. The elasticity of the skin will be reconstituted for an unparalleled tone



Cabin - Apply evenly to the face, neck and décolleté and leave on for about 20 minutes, remove with a warm cloth.



At home -Product for professional use only.

STEPS FOR MATURE SKIN



- | | | | | | |
|---|------------------------------|---|------------------------|---|-------------------------------|
| 1 | cleanmilk
Gentle cleanser | 2 | scruboff
Scrub | 3 | tonelotion
Gentle toner |
| 4 | ageserum
Smoothing serum | 5 | agemask
Toning mask | 6 | agecream
Anti-ageing cream |

o'care
MILANO

Code **OC.AGE.004P**
200ml Net Wt.6.8 oz



ANTI-AGE
LINE
Starts at 20 years of age



ACTIVE INGREDIENTS



Sunflower oil (Helianthus annuus (sunflower) seed oil): With its high content of polyunsaturated fatty acids (linoleic and linolenic) it provides a nourishing, moisturising and protective action.



Seaweed extract (Laminaria digitata extract): features high doses of folic acid and numerous vitamins, making it a nutrient-rich food.



Diatomaceous earth: Strengthens bone and cartilage tissues, improve the elasticity of blood vessels and promote the regeneration of connective tissue.



Liquid crystal emulsifier derived from olive oil: Thanks to its chemical-physical characteristics similar to those of the epidermis, it integrates perfectly into the skin barrier strengthening its integrity. It increases considerably the delivery of the functional substances.



Moisturizing micro-ingredients: they have a super-moisturizing action, allow a controlled release on the skin increasing the duration of the moisturizing effect.



Vitamin E: has an antioxidant action, protecting the skin from skin aging due to the formation of free radicals.



O-Antiaging: this technology represents a clear step forward in skin rejuvenation. A revolutionary double capsule layer with peptides anchored to its surface which they are capable of select and tag Fibroblasts (like a GPS device) and there release the active anti-aging ingredient contained in the capsule. This stimulates the production of collagen and elastin with a high performance anti-aging action.

agecream

ANTI-AGEING CREAM

Precious cream formulated with innovative **"O-Antiaging Peptides"** with exclusive performance, specially designed to effectively counteract the signs of aging. Liquid crystals deriving from olive oil improve the absorption of functional substances, also ensuring a moisturizing effect and a velvety touch.



Cabin - Agecream is used in the cabin at the end of the specific anti-ageing treatment. Dispense 1/2 pouf of cream onto your hands. Massage gently to facilitate absorption. Use as needed on neck and décolleté.



At home Apply a small amount of the product morning and evening and massage it until fully absorbed Also suitable as a day cream.

STEPS FOR MATURE SKIN



- | | | | | | |
|---|-------------------------------------|---|-------------------------------|---|--------------------------------------|
| 1 | cleanmilk
Gentle cleanser | 2 | scruboff
Scrub | 3 | tonelotion
Gentle toner |
| 4 | ageserum
Smoothing serum | 5 | agemask
Toning mask | 6 | agecream
Anti-ageing cream |

o'care
MILANO

Code **OC.AGE.002P**
200ml Net Wt.6.8 oz



Code **OC.AGE.001R**
50ml Net Wt.1.7 oz

**ANTI-AGE
LINE**
Starts at 20 years of age



ACTIVE INGREDIENTS



Calendula (Calendula officinalis flower extract): Rich in triterpenes, flavonoids, polysaccharides, carotenes and phytosterols. Its strong soothing properties are due to the non-saponifiable component, composed of flavonoids and mucilage. Flavonoids, exert an anti-inflammatory effect on sensitive and inflamed skin, stimulate re-epithelialisation, accelerate epidermal turnover and promote the activity of dermal fibroblasts by promoting collagen synthesis.



Allantoin is a moisturising, soothing and re-epithalising agent and is an effective skin protector. It has a moisturising and de-reddening action at low concentrations.



Ultra-delicate surfactants: Dermo-compatible and clinically tested, they gently cleanse the skin and give an exceptional velvety feel. Surfactants are substances capable of removing the dirt and lowering the surface tension of the oil, facilitating their removal from the surface of the skin.

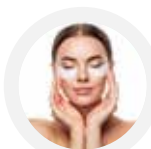


High molecular weight Sodium Hyaluronate (greater than 300 kDalton) performs a protective action on the skin by preventing water loss. The epidermis will appear smooth, polished and well hydrated.

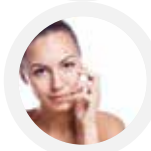
eyeremover

SPECIFIC EYE MAKE-UP REMOVER

Delicate eye make-up remover containing mucilage of Calendula, Hyaluronic Acid and Allantoin for a soothing and hydrating action. It perfectly and gently removes make-up respecting the eyes, even light-coloured ones.



Cabin - Apply a few drops to a cotton pad or make-up remover sponge, apply to the eye area and remove make-up gently. For stubborn mascara, leave the pad on, massaging for a few seconds and remove gently.



At home - Can be used daily. Apply on a cotton pad and remove make-up from eyes using eyeremover. We recommend applying the specific eye**cream** to rebalance the hydration and nourishment of the area.

STEPS FOR DELICATE AREAS



- | | | |
|--------------------------------------|------------------------------|------------------------------|
| 1 eyeremover
Eye make-up remover | 2 tonelotion
Gentle toner | 3 eyemask
Peel-off mask |
| 4 eyeactivator
Soothing activator | 5 sensserum
Calming serum | 6 eyecream
Soothing cream |

o'care
MILANO

Code **OC.EYE.001RP**
150ml Net Wt.5.1 oz



**EYE
CARE**
Particular eye area

Ingredients: Aqua (Water), Propanediol, Calendula officinalis flower extract, Poloxamer 188, Sodium hyaluronate, Allantoin, Sodium cocoamphacetate, Tetrasodium glutamate diacetate, Lactic acid, Potassium sorbate, Sodium benzoate.



Dermatologically
tested at the
University of Ferrara

ACTIVE INGREDIENTS



Seaweed Vesiculosus Fucus collected near the Bay of Maine: it contributes significantly to reduce dark circles. Demonstrates good collagen stimulation and wrinkle reduction activities. It stimulates an enzyme called Heme Oxygenase type 1 (HO-1). This enzyme catabolizes heme (which is the cause of the appearance of bags around the eyes) into catabolites known to have anti-inflammatory, anti-oxidant and cytoprotective properties, while also helping to reduce the appearance of dark circles, fine lines and wrinkles at the same time.



Butcher's Broom, Centella Asiatica, Calendula, Horse Chestnut, Licorice, Provitamin B5, Hydrolyzed Protein Yeast: it improves skin microcirculation by smoothing the skin tone and effectively fights the imperfections of dark circles and couperose. Rich in saponoids and flavonoids, it protects micro blood vessels by strengthening their tone with an exceptional soothing and calming effect on the skin.



High Molecular Weight Hyaluronic Acid: has a soothing, healing, moisturizing and anti-inflammatory effect on the skin surface.



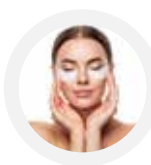
Mucilage of Calendula: it has a moisturizing, regenerating and emollient action.

eyeactivator

EYE CONTOUR SPECIFIC ACTIVATOR

Specific liquid for eye contour peel-off mask. Exerts an anti-ageing, moisturising and smoothing action.

It helps to improve the appearance of bags and dark circles.



Cabin - Vigorously stir 10g of **eyemask** powder with 30ml of **eyeactivator** Peel Off to obtain a homogeneous paste. Apply immediately to the eye contour area and leave it to work for 15-20 minutes. The mask can then be easily removed. Treatment at the spa can be carried out once a week for at least 5 sessions.



At home - Professional use only. Use **eyecream** as maintenance.

*PAY PARTICULAR ATTENTION TO THYROID-RELATED CONDITIONS

STEPS FOR DELICATE AREAS



- | | | |
|---|-------------------------------------|-------------------------------------|
| 1 eyeremover
Eye make-up remover | 2 tonelotion
Gentle toner | 3 eyemask
Peel-off mask |
| 4 eyeactivator
Soothing activator | 5 sensserum
Calming serum | 6 eyecream
Soothing cream |

o'care
MILANO

Code **OC.EYE.003P**
200ml Net Wt.6.8 oz



**EYE
CARE**
Particular eye area



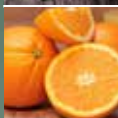
ACTIVE INGREDIENTS



Diatomaceous earth: also known as diatomaceous earth, it is a natural product obtained from the fossil sediments of algae. It has beneficial and anti-wrinkle effects on the skin, improves the elasticity of blood vessels and promotes the regeneration of connective tissue.



Currants (Ribes nigrum (Black currant) fruit): The pulp of the blackcurrant has a very high level of antioxidants due to the high concentration of anthocyanins, one of the most important groups of pigments present in plants. These help neutralise free radicals, which irreparably damage skin cells. Blackcurrant seeds contain a highly refined oil rich in gamma linoleic acid (omega 6). This helps to promote vitality by refreshing and brightening the skin, leaving it soft, supple and velvety.

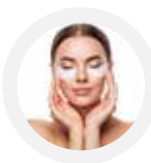


Vitamin C (Sodium ascorbate): Exerts an illuminating, lightening and antioxidant action. Protects against photoaging and stimulates the production of collagen.

eyemask

PEEL-OFF MASK EYE CONTOUR WITH ANTI-AGEING ACTION

Powder for eye contour peel off mask (requires activation with eyeactivator). Exerts an anti-ageing, moisturising and smoothing action. Helps improve the appearance of dark circles.



Cabin - Vigorously stir 10g of **eyemask** with 30ml of **eyeactivator**. Peel Off to obtain a homogeneous paste. Apply immediately to the eye contour area and leave it to work for 15-20 minutes. The mask can then be easily removed. Treatment at the spa can be carried out once a week for at least 5 sessions.



At home - Apply **eyecream** in the morning and evening, using a small amount of product and massaging until fully absorbed.

*PAY SPECIAL ATTENTION TO THYROID-RELATED CONDITIONS

STEPS FOR DELICATE AREAS



- | | | | | | |
|---|---|---|-----------------------------------|---|-----------------------------------|
| 1 | eyeremover
Eye make-up remover | 2 | tonelotion
Gentle toner | 3 | eyemask
Peel-off mask |
| 4 | eyeactivator
Soothing activator | 5 | sensserum
Calming serum | 6 | eyecream
Soothing cream |

O'care
MILANO

Code **OC.EYE.002P**
60gr Net Wt.2.0 oz



**EYE
CARE**
Particular eye area



ACTIVE INGREDIENTS

**Apple stem cells (Malus domestica fruit cell culture extract):**

By stimulating the formation of collagen and elastin, apple stem cells have a visible and appreciable anti-ageing effect, smoothing out wrinkles, preserving the vitality of the skin and delaying ageing.



Cecropia (Cecropia obtusa bark extract): A plant from the Amazon Forest that reduces the bags under the eyes stimulating the processes of lipolysis. Clinical studies show a 13% reduction in bags after 28 days and a 23% reduction after 56 days.



Seaweed Vesiculosus Fucus collected near the Bay of Maine: it contributes significantly to reduce dark circles. Demonstrates good collagen stimulation and wrinkle reduction activities. It stimulates an enzyme called Heme Oxygenase type 1 (HO-1). This enzyme catabolizes heme (which is the cause of the appearance of bags around the eyes) into catabolites known to have anti-inflammatory, anti-oxidant and cytoprotective properties, while also helping to reduce the appearance of dark circles, fine lines and wrinkles at the same time.



Butcher's Broom, Centella Asiatica, Calendula, Horse Chestnut, Licorice, Provitamin B5, Hydrolyzed Protein Yeast: improve skin microcirculation by smoothing the skin tone and effectively fight the imperfections of dark circles and couperose. Rich in saponoids and flavonoids, they protect the blood microvessels by strengthening their tone with an exceptional soothing and calming effect on the skin.



Liquid Crystal Emulsifier derived from olive oil: thanks to its chemical-physical characteristics similar to those of the epidermis, it integrates perfectly into the skin barrier, reinforcing its integrity. It significantly increases the conveyance of substances functional and skin hydration. Leaves the skin soft and silky.

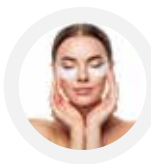


Combination of fatty acids: Improves the skin barrier function, prevents the loss of trans-epidermal eater, contributes to promoting the elasticity of the skin.

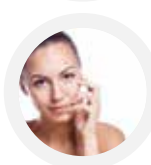
eyecream

SPECIFIC EYE CONTOUR CREAM

Specific cream for the eye area, perfect for counteracting wrinkles, bags and dark circles. Leaves the skin of the eye contour area soft, smooth and nourished.



Cabin - Apply **eyecream** at the end of the facial treatment or after the peel-off **eyemask** mask. Massage gently until fully absorbed.



At home - Apply a small amount of product morning and evening massaging until fully absorbed.

**PAY SPECIAL ATTENTION TO THYROID-RELATED CONDITIONS*

STEPS FOR DELICATE AREAS



- | | | |
|---|-------------------------------------|-------------------------------------|
| 1 eyeremover
Eye make-up remover | 2 tonelotion
Gentle toner | 3 eyemask
Peel-off mask |
| 4 eyeactivator
Soothing activator | 5 sensserum
Calming serum | 6 eyecream
Soothing cream |

O'care
MILANO

Code **OC.EYE.004P**
50ml Net Wt.1.7 oz



Code **OC.EYE.005R**
15ml Net Wt.0.5 oz

**EYE
CARE**
Particular eye area



ACTIVE INGREDIENTS



Almond oil (Prunus amygdalus dulcis (Sweet almond oil)): For a soothing, nourishing action.



Black sesame (Sesamus indicum (Sesame) seed oil): High content of polyunsaturated fatty acids (linoleic and linolenic) it provides a soothing and repairing action.



Macadamia nuts (Macadamia integrifolia seed oil): rich in elasticising substances, very useful to make the skin more elastic and compact, useful to fight possible sagging of the face. Gives shine, silkiness and elasticity.



Soybean (Glycine soja (Soybean) oil): With its high content of polyunsaturated fatty acids (linoleic and linolenic) it provides a soothing and repairing action.



Argan oil (Argania spinosa kernel oil): rich in fatty acids, Omega 3, Omega 6, vitamin A and vitamin E which fight skin relaxation and ageing.



Sunflower oil (Helianthus annuus (sunflower) seed oil): With its high content of polyunsaturated fatty acids (linoleic and linolenic) it provides a nourishing, moisturising and protective action.



Olive oil (Olea europaea (Olive) fruit oil): Rich in polyphenols and Vitamin E, it has a nourishing, soothing and protective action.



Jojoba (Simmondsia chinensis (jojoba) seed oil): Jojoba oil counteracts ageing by reducing and preventing the formation of wrinkles. It also has a mild anti-inflammatory and soothing effect and is suitable for all skin types.



Carrot (Daucus carota (Carrot) sativa root extract): counteracts the formation of free radicals and skin ageing Also excellent for eczema, furuncles, couperose.



Rice brain oil (Oryza sativa (Rice) bran oil): Emollient action, moisturising, smoothing and nourishing.



Avocado (Persea gratissima (Avocado) oil): Rich in unsaturated fatty acids and vitamins, revitalising.

powergold

LIGHTENING AND NOURISHING

Multi-purpose beauty oil, made of a mixture of 11 premium plant-based oils, gelled naturally. Extremely rich of active ingredients, such as triglycerides, cholesterol, saturated and unsaturated fatty acids, Omega 3, Omega 6, phospholipids and Vitamin E, which are the same constituent elements of the skin and act by promoting elasticity and compactness.



Cabin - *powergold* is used in the cabin at the end of the specific treatment. Use the paddle to scoop a very small amount of cream onto your hands. Massage gently to facilitate absorption. Use as needed on neck and décolleté.



At home - Use *powergold* daily - recommended before make-up. Apply a small amount of the product in the morning and evening massaging until fully absorbed.

SPECIAL STEPS



- | | | | | | |
|---|-------------------------------------|---|-------------------------------|---|--|
| 1 | cleanmilk
Gentle cleanser | 2 | scruboff
Scrub | 3 | tonelotion
Gentle toner |
| 4 | ageserum
Smoothing serum | 5 | agemask
Toning mask | 6 | powergold
Illuminating cream |

o'care
MILANO

Code **OC.SPECIAL.002R**
50ml Net Wt.1.7 oz



**SPECIAL
SKIN**
dedicated to your skin



ACTIVE INGREDIENTS



O-Filler: this technology represents a clear step forward in skin rejuvenation. A revolutionary double capsule layer with peptides anchored to its surface that are able to select and target the Fibroblasts (like a GPS device) and release them the active anti-ageing ingredient contained in the capsule. This stimulates the production of hyaluronic acid by working directly on fine wrinkles for a more toned and visibly relaxed skin.



Seaweed Fucus Vesiculosus collected in proximity to the Bay of Maine: they are proven to be able to reduce dark circles as early as two weeks. They also have an activity of stimulating the synthesis of collagen and reducing wrinkles, improving the appearance of the eye contour. They have an antioxidant action.



Cross-linked and dehydrated microspheres of low Hyaluronic Acid molecular weight combined with high molecular weight polysaccharides derived from a variety of Asian plant: they penetrate into the upper levels of the epidermis, capture the water that normally evaporates from the skin and exploiting the ability of Hyaluronic acid to act as a sort of "molecular sponge", swell and increase in volume. In this way they exert pressure that pushes the epidermis upwards, thus reducing even the deepest wrinkles with an authentic filler effect.



Hyaluronic Acid Liposomes: help reduce wrinkles giving volume and exerting a moisturizing, smoothing and restructuring action.



Vitamin E: it has an antioxidant action, protecting the skin from skin aging due to the formation of free radicals.



Liquid crystal emulsifier derived from olive oil: Thanks to its chemical-physical characteristics similar to those of the epidermis, it integrates perfectly into the skin barrier strengthening its integrity. It increases considerably the delivery of the functional substances.



Combination of olive-oil derived fatty acids: Improves the skin barrier function, prevents the loss of trans-epidermal water, contributes to promoting the elasticity of the skin. Exerts a highly protective action, which helps to fight the symptoms of irritation. Makes the skin feel velvety.

fillercream

ANTI-AGEING CREAM WITH FILLER EFFECT

Exclusive cream with active liquid crystals that can increase the absorption of the functional substances. Enriched with biomicrospheres of Hyaluronic Acid which exercise a filler effect with anti-ageing action. The presence of plant stem cells and Vitamin C microlipids guarantees a revitalising and anti-oxidant action. Leaves the skin nourished, hydrated and velvety.



Cabin - Agecream is used in the cabin at the end of the special treatment. Dispense 1/2 pouf of the cream on your hands. Massage gently to facilitate absorption. Use as needed on neck and décolleté.



At home - Apply a small amount of the product morning and evening and massage it until fully absorbed. Also suitable as a day cream or as a make-up base.

SPECIAL STEPS



- | | | | | | |
|---|------------------------------|---|------------------------|---|-----------------------------|
| 1 | cleanmilk
Gentle cleanser | 2 | scruboff
Scrub | 3 | tonelotion
Gentle toner |
| 4 | ageserum
Smoothing serum | 5 | agemask
Toning mask | 6 | fillercream
Filler cream |

o'care
MILANO

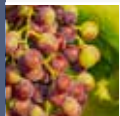
Code **OC.SPECIAL.001RP**
30ml Net Wt.1.0 oz



**SPECIAL
SKIN**
dedicated to your skin



ACTIVE INGREDIENTS



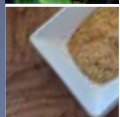
Grapes (Vitis vinifera (grape) fruit extract): antioxidant and soothing properties. Has a vasoprotective action by decreasing capillary permeability and increasing the resistance of the vessel walls.



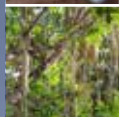
Ivy (Hedera helix (Ivy) leaf/stem extract): Toning action on all parts of the body that tend to relax and lose tone.



Centella Asiatica (Centella asiatica leaf extract): improves the functionality of the microcirculation and skin elasticity, has an elasticizing, toning and healing action.



Fenugreek (Trigonella foenum-graecum seed extract): Nourishing, restorative and toning action.



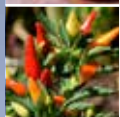
Kigelia africana bark extract (Sausage tree): Tensing, firming and elasticising effect.



Sunflower oil (Helianthus annuus (sunflower) seed oil): With its high content of polyunsaturated fatty acids (linoleic and linolenic) it provides a nourishing, moisturising and protective action.



Orange (Citrus aurantium dulcis (Orange) peel oil): Used for its astringent and purifying properties



Chilli (Capsicum frutescens fruit extract): For the cosmetic treatment of cellulite imperfections, ideal for a toning and draining massage.



Vitamin E: With its anti-oxidant action, it protects the skins from ageing due to the formation of free radicals.

warm**slim** body**cream**

SLIMMING HEATING EMULSION

Body cream formulated with many functional substances assisting the treatment of the imperfections of cellulite and areas affected by the accumulation of fat.



Cabin - Apply a small amount morning and evening to the affected area and massage in a circular motion until fully absorbed.



At home - Apply a small amount of the product morning and evening and massage it until fully absorbed.

WARNING: following the use of the product, a slight redness, warmth or tingling sensation may appear, depending on the skin sensitivity of the subject. It is completely normal, it is due to the action of the functional substances contained.

SLIMMING STEPS



- | | | |
|---|---|--|
| 1 clean milk
Gentle cleanser | 2 body scrub
Exfoliant | 3 body powder
Enzyme powder |
| 4 enzy slim
Slim activator | 5 body serum
Firming serum | 6 warm slim body cream
Slim emulsion |

O'care
MILANO

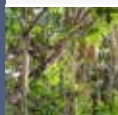
Code **OC.BOD.001RP**
200ml Net Wt.6.8 oz



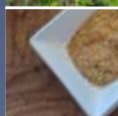
**BODY
LINE**
care for the skin of the body



ACTIVE INGREDIENTS



Kigelia africana bark extract (Sausage tree): Tensing, firming and elasticising effect.



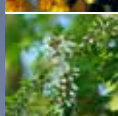
Fenugreek (Trigonella foenum-graecum seed extract): Exerts a nourishing, restorative and toning action.



Sunflower oil (Helianthus annuus (sunflower) seed oil): With its high content of polyunsaturated fatty acids (linoleic and linolenic) it provides a nourishing, moisturising and protective action.



Hypericum (Hypericum perforatum extract): Exerts a stimulating and toning action.



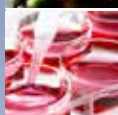
Acacia senegal (Acacia senegal gum): Maintains the stability of the product and above all has a disinfecting action.



Vitamin E: Performs an anti-oxidant action protecting the skin from ageing due to the formation of free radicals.



Combination of olive-oil derived fatty acids: Improves the skin barrier function, prevents the loss of trans-epidermal water, contributes to promoting the elasticity of the skin. Exerts a highly protective action, which helps to fight the symptoms of irritation. Makes the skin feel velvety.

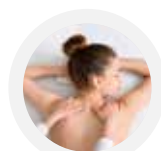


Acetyl Hexapeptide-38: it has been tested to stimulate adipogenesis and the accumulation of lipids by carrying out a breast plumping action.

breastcream

BREAST TONING CREAM WITH VOLUMISING EFFECT

Nourishing cream that strengthens and improves the elasticity of the skin on the breast with a volumising, toning and firming effect.



Cabin - Apply the product from the lower crease of the breast to the muscle supporting it with a pumping massage until fully absorbed.



At home - Apply the product morning and evening, massaging with circular movements until fully absorbed. It can be used daily, even twice a day if needed.

BREAST STEPS



- | | | | | | |
|---|-------------------------------------|---|-----------------------------------|---|--|
| 1 | cleanmilk
Gentle cleanser | 2 | scruboff
Scrub | 3 | bodypowder
Enzyme powder |
| 4 | enzytone
Tone Activator | 5 | bodyserum
Firming serum | 6 | breastcream
Volumising cream |

o'care
MILANO

Code **OC.BOD.002RP**
100ml Net Wt.3.4 oz



**BODY
LINE**
care for the skin of the body



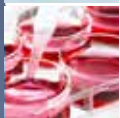
ACTIVE INGREDIENTS



Maltodextrin: Maltodextrins are biotechnological products obtained from totally vegetable raw materials. They have a moisturising action and protect the enzymes Lipase and Hyaluronidase improving their stability.



Hyaluronidase enzyme: The enzyme hyaluronidase exerts a specific hydrolysis of hyaluronic acid which, given its high capacity to bind water, is the main cause of the phenomenon of water retention typical of the pathology of cellulite.

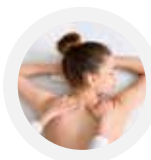


Enzima Lipase: The lipase enzyme determines a significant enzymatic degradation action of the triglycerides present in adipocytes (main components of adipose deposits) into acids free fats and glycerol.

bodypowder

CONCENTRATED POWDER WITH LIPASE ENZYMES AND HYALURONIDASE

Concentrated powder containing lipase enzymes and hyaluronidase. Significantly improves the appearance of the skin and is an adjuvant to the treatment of blemishes caused by cellulite. Is body imperfections, cellulite, fat and tone.



Cabin - Mix 1 gram of Enzyme Powder with 40 ml of enzymeslim/cell/tone depending on the size of the treatment area to be treated, possibly double the doses. Mix with a brush until a homogeneous gel is obtained. Apply to the areas to be treated. Leave the product on for 15-20 minutes. For a light effect use once a week - For a strong effect, use twice a week.



At home - Maintenance involves the use of bodyscrub to make the skin more receptive to the active ingredients of warm slim active warming emulsion or bodyserum (toning) as needed.

STEPS FOR BODY IMPERFECTIONS



- | | | | | | |
|---|-------------------------------------|---|-----------------------------------|---|---|
| 1 | cleanmilk
Gentle cleanser | 2 | bodyscrub
Scrub | 3 | bodypowder
Enzyme powder |
| 4 | enzytone*
Tone Activator | 5 | bodyserum
Firming serum | 6 | reshape bodycream
Modelling cream |

*or enzymcell/slim

o'care
MILANO

Code **OC.BOD.003P**
25gr Net Wt.0.9 oz



**BODY
LINE**
care for the skin of the body



ACTIVE INGREDIENTS



Caffeine: With an anti-cellulite and anti-addiction action, it has lipolytic and thermogenic potential. Stimulates microcirculation, promotes drainage and removal of excess fluids.



Centella Asiatica (Centella asiatica leaf extract): Stimulates blood circulation, has an elasticising, toning and healing action.



Camellia (Camelia sinensis leaf extract): Has a draining action and promotes microcirculation.



Ivy (Hedera helix (Ivy) leaf/stem extract): Has a marked toning action on all parts of the body that tend to relax and lose tone.

enzyslim

SLIMMING ENZYMATIC ACTIVATOR

An enzymatic activating serum with a slimming effect, a concentration of active ingredients such as caffeine, Asian centella, green tea and ivy to stimulate a slimming and figure reshaping action.



Cabin - Mix 40 ml of **enzyslim** with 1 gram of **bodypowder** with depending on the size of the treatment you intend to perform, possibly doubling the doses. Mix with a brush until a homogeneous gel is obtained. Apply to the areas to be treated. Leave the product on for 15-20 minutes. For a light effect use once a week - For a strong effect, use twice a week.



At home - Maintenance involves the use of **bodyscrub** to make the skin more receptive to active ingredients and **warmslim** active warming emulsion.

SLIMMING STEPS



- | | | | | | |
|---|-------------------------------------|---|-----------------------------------|---|------------------------------------|
| 1 | cleanmilk
Gentle cleanser | 2 | bodyscrub
Scrub | 3 | bodypowder
Enzyme powder |
| 4 | enzyslim
Slim activator | 5 | bodyserum
Firming serum | 6 | hydrafit
Tone emulsion |

o'care
MILANO

Code **OC.BOD.004P**
500ml Net Wt.16.9 oz



**BODY
LINE**
care for the skin of the body



ACTIVE INGREDIENTS



Centella Asiatica (Centella asiatica leaf extract): Stimulates blood circulation, has an elasticising, toning and healing action.



Fucus (Fucus vesiculosus extract): Promotes the exchange of liquids and has a reducing, toning, stimulating and anti-cellulite action.



Guarana (Paullinia cupana sees extract): Has energising, toning and stimulating properties.



Iodine amine of organic origin: completely free from free iodine. It locally stimulates the metabolism of fats which are more attackable than iodine itself and other ingredients, without interfere with hormonal activity.

enzycell

ENZYME ACTIVATOR *CELLULITE

Concentrated activating serum adjuvant in the treatment of imperfections caused by the cellulite, containing an iodinated amine completely free of free iodine, guarana, sea oak and centella asiatica.

**treatment of imperfections caused by cellulite*



Cabin - Mix 40 ml of **enzycell** with 1 gram of **bodypowder** depending on the size of the treatment area that you intend to work on, you may need to double the quantities indicated. Mix with a brush until a homogeneous gel is obtained. Apply to the areas to be treated. Leave the product on for 15-20 minutes. For a light effect, use once a week - For an intensive effect, use twice a week.



At home - Maintenance involves the use of **bodyserum** to make the skin more receptive to active ingredients and **warmslim** active warming emulsion.

STEPS FOR CELLULITE



- | | | |
|--|--------------------------------------|--|
| 1 clean milk
Gentle cleanser | 2 bodys crub
Scrub | 3 bodys powder
Enzyme powder |
| 4 enzy ccell
Cell Activator | 5 bodys erum
Firming serum | 6 hydrac cell
Cell emulsion |

o'care
MILANO

Code **OC.BOD.005P**
500ml Net Wt.16.9 oz



**BODY
LINE**
care for the skin of the body



ACTIVE INGREDIENTS



Hypericum (Hypericum perforatum extract): Exerts a stimulating and toning action.



Horsetail (Equisetum arvense extract): Thanks to its important content of mineral salts, it carries out a remineralising action, favouring the formation of elastic lips.



Ivy (Hedera helix (Ivy) leaf/stem extract): Has a marked toning action on all parts of the body that tend to relax and lose tone.

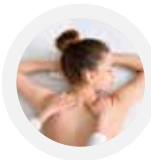


Marine Collagen (Soluble collagen): Gives support and resistance to the entire skin structure, carries out a compacting, moisturising, elasticising, protecting action and preventing skin ageing.

enzytone

ENZYMATIC TONING ACTIVATOR

Concentrated activator serum with toning effect containing Marine Collagen, extract of St. John's Wort, Equisetum and Ivy.



Cabin - Mix 40 ml of **enzytone** with 1 gram of **bodypowder** depending on the size of the treatment area you intend to work on, you can possibly double the doses. Mix with a brush until a gel is obtained homogeneous. Apply to the areas to be treated. Leave the product for 15-20 minutes. For a light effect, use once a week - For an intensive effect, use twice a week.



At home - Maintenance involves the use of **bodyscrub** to make the skin more receptive to active ingredients and **bodyserum** intensive serum with a toning effect.

STEPS FOR ATONY IMPERFECTIONS



- | | | | | | |
|---|-------------------------------------|---|-----------------------------------|---|------------------------------------|
| 1 | cleanmilk
Gentle cleanser | 2 | bodyscrub
Scrub | 3 | bodypowder
Enzyme powder |
| 4 | enzytone
Tone Activator | 5 | bodyserum
Firming serum | 6 | hydrafit
Tone emulsion |

o'care
MILANO

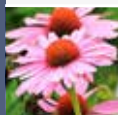
Code **OC.BOD.006P**
500ml Net Wt.16.9 oz



**BODY
LINE**
care for the skin of the body



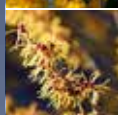
ACTIVE INGREDIENTS



Echinacea (Echinacea angustifolia extract): has a re-epithelising, elasticising, toning and antiseptic action.



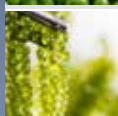
Hypericum (Hypericum perforatum extract): Exerts a stimulating and toning action.



Witch hazel: it has an astringent, toning and soothing action



Peptides obtained from Pea Extract: concentrated in a peptide that helps protect and repair the proteins of the epidermis. Strengthens skin tone and elasticity. Fights the deterioration of the elastic fibres of the skin, maintaining the right toning in the areas treated. Tightens the tissues improving the toning and elasticity of the skin.



Marine Collagen (Soluble collagen): gives support and resistance to the entire skin structure, carries out a compacting, moisturising, elasticising, protecting action and preventing skin ageing.



Vitamin E: performs an anti-oxidant action protecting the skin from ageing due to the formation of free radicals.

bodyserum

FIRMING BODY SERUM

Concentrated serum specifically studied to perform a toning and elasticising effect. It contains exclusive peptides obtained from Pea extract, Echinacea and Vitamin E. Improves the texture of the skin leaving it soft, silky and compact.



Cabin -Apply a small portion to the area requiring treatment and massage until completely absorbed. We recommend the toning steps at the spa with **enzytone** enzyme.



At home- Maintenance involves the use of **bodyserum** also at home in the same 200ml format, supported by **bodyrenewer** to make the skin more receptive to the active ingredients. Can be used daily morning and evening.

STEPS FOR ATONY IMPERFECTIONS



- | | | | | | |
|---|-------------------------------------|---|-----------------------------------|---|--|
| 1 | cleanmilk
Gentle cleanser | 2 | bodyscrub
Exfoliant | 3 | bodypowder
Enzyme powder |
| 4 | enzytone*
Tone Activator | 5 | bodyserum
Firming serum | 6 | warmslim bodycream
Slim emulsion |

*or enzytcell/slim

o'care
MILANO

Code **OC.BOD.007RP**
200ml Net Wt.6.8 oz



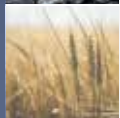
**BODY
LINE**
care for the skin of the body



ACTIVE INGREDIENTS



Volcanic sand: Black in colour, resulting from the flow of lava from the volcanic mountains of Iceland. It performs an accurate exfoliating and energizing action.



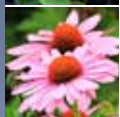
Wheat (Triticum vulgare (Wheat) germ oil): used as the base of many creams for mature skin thanks to its high content of tocopherols (vitamin E) which also makes it an excellent antioxidant.



Shea butter (Butyrospermum parkii (Shea) butter): Shea butter has many properties. It has excellent anti-inflammatory properties and stimulates the production of collagen. Contains phytosterols and vitamins for an intense soothing and nourishing effect.



Centella Asiatica (Centella asiatica leaf extract): Stimulates blood circulation, has an elasticising, toning and healing action.



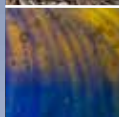
Echinacea (Echinacea angustifolia extract): Has a re-epithelising, elasticising, toning and antiseptic action.



Ivy (Hedera helix (Ivy) leaf/stem extract): Has a marked toning action on all parts of the body that tend to relax and lose tone.



Sunflower oil (Helianthus annuus (sunflower) seed oil): With its high content of polyunsaturated fatty acids (linoleic and linolenic) it provides a nourishing, moisturising and protective action.



Olive-oil derived liquid crystal emulsifier (Cetearyl olivate): Thanks to its chemical and physical characteristics similar to those of the epidermis, it integrates into the skin barrier, strengthening its integrity. Increases the delivery of the functional substances.



Fruit acids (alpha hydroxy acids): they intervene in the renewal processes of the stratum corneum, accelerating cell turnover with a consequent increase in the vital layers of the skin. They increase the brightness of the skin, improve hydration and elasticity of the stratum corneum.

body**scrub**

EXFOLIATING SMOOTHING BODY SCRUB

Contributes to the mechanical elimination of the dead cells on the surface of the skin. Formulated with volcanic sand from Iceland, it contains substances with soothing, nourishing and hydrating action. Leaves skin clean, radiant and smooth.



Cabin - Use **body**scrub**** for a deep exfoliation of the skin. Essential pre-treatment cosmetic preparation. For a more exfoliating effect, use it on dry skin with gloves or brush, or slightly moistened to make it softer. We recommend using it once a week.



At home - **body**renewer**** is the ideal ally of **body**scrub**** for home treatment. It can be used just before showering by spraying a few doses of the product on the legs and buttocks. Massage with light touches from the bottom upwards for a few minutes. Remove with a dampened towel or in the shower.

STEPS FOR BODY SKIN BLEMISHES



- 1** **clean**milk****
Gentle cleanser
- 2** **body**scrub****
Exfoliant
- 3** **body**powder****
Enzyme powder
- 4** **enzytone***
Tone Activator
- 5** **body**serum****
Firming serum
- 6** **warm**slim** body**cream****
Slim emulsion

*or enzy**cell**/slim

o'care
MILANO

Code **OC.BOD.008P**
500ml Net Wt.18.9 oz



**BODY
LINE**
care for the skin of the body



ACTIVE INGREDIENTS



Diatomaceous earth: also known as diatomaceous earth, it is a natural product obtained from the fossil sediments of algae. It has beneficial and anti-wrinkle effects on the skin, improves the elasticity of blood vessels and promotes the regeneration of connective tissue.



Ultra-delicate surfactants: Dermatologically compatible and clinically tested, they gently cleanse the skin and give an exceptional velvety feel.



Fruit acids (alpha hydroxy acids) (Lactic acid, Glycolic acid, Malic acid, Tartaric acid): intervene in the renewal processes of the stratum corneum, accelerating cell turnover, resulting in an increase in the vital layers of the skin. They increase the brightness of the skin, improve the hydration and the elasticity of the horny layer.

bodyrenewer

ANTI-AGEING REPAIRING BODY LOTION

It is a non-aggressive exfoliating cleanser, obtained from a mixture of natural acids, AHA, and a new generation of gentle, non-irritating surfactants that give smoothing and silky effect.



Cabin - Use **bodyrenewer** for gentle pre-treatment exfoliation. It can be used frequently and has no side effects, thanks to its ultra-delicate active ingredients.



At home - This product is not suitable for home treatment due to its unique nature.

STEPS FOR BODY SKIN BLEMISHES



- | | | | | | |
|---|-------------------------------------|---|--|---|---|
| 1 | cleanmilk
Gentle cleanser | 2 | bodyrenewer
Exfoliating lotion | 3 | bodypowder
Enzyme powder |
| 4 | enzytone*
Tone Activator | 5 | bodyserum
Firming serum | 6 | warmslim bodycream
Emulsione slim |

*or enzytone/slim

o'care
MILANO

Code **OC.BOD.009P**
200ml Net Wt.6.8 oz



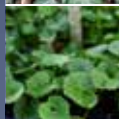
**BODY
LINE**
care for the skin of the body



ACTIVE INGREDIENTS



Ivy (Hedera helix (Ivy) leaf/stem extract): Rich in anti-irritants and antioxidants, it produces a strong energising, refreshing and stimulating effect.



Centella Asiatica (Centella asiatica leaf extract): Stimulates blood circulation, has an elasticising, toning and healing action.



Shea butter (Butyrospermum parkii (Shea) butter): Rich in unsaponifiable fractions, it contains sitosterols, vitamins and has a soothing and nourishing action.



Sunflower oil (Helianthus annuus (sunflower) seed oil): With its high content of polyunsaturated fatty acids (linoleic and linolenic) it provides a nourishing, moisturising and protective action.



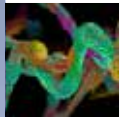
Wheat (Triticum vulgare (Wheat) germ oil): used as the base of many creams for mature skin thanks to its high content of tocopherols (vitamin E) which also makes it an excellent antioxidant.



Echinacea (Echinacea angustifolia extract): Has a re-epithelising, elasticising, toning and antiseptic action.



Coccoloba (Coccoloba uvifera fruit extract): Reduces cellulite imperfections and body volumes, reduces swelling and tissue atony and reshapes the silhouette.



O-Silhouette: a revolutionary double-layered capsule with peptides anchored to its surface that are able to select and tag adipocytes (like a GPS device) and release them the active anti-cellulite ingredient contained in the capsule.

bodyreshape

REMODELLING BODY CREAM

Very valuable cream formulated with latest generation bio-intelligent micro-ingredients. Has an adjuvant action to the treatment of blemishes caused by cellulite and localised adiposity. The liquid crystals deriving from olive oil improve the absorption of the functional substances providing in addition a hydrating effect and velvety touch.



Cabin - Use **bodyreshape** within the specific body reshaping programme, also at the end of treatments with technologies. It can be used frequently, as it has no side effects, thanks to the controlled active ingredients.



At home - Maintenance involves the use of **warmSlim** active warming emulsion with slim effect and **bodyserum** for an intensive firming effect.

STEPS FOR BODY REMODELLING



- | | | |
|--|--|--|
| 1 cleanmilk
Gentle cleanser | 2 bodyscrub
Exfoliant | 3 bodypowder
Enzyme powder |
| 4 enzytone*
Tone Activator | 5 bodyserum
Firming serum | 6 reshape bodycream
Modelling cream |

*or enzyccell/slim

o'care
MILANO

Code **OC.BOD.010P**
500ml Net Wt.16.9 oz



**BODY
LINE**
care for the skin of the body



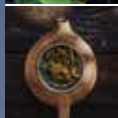
ACTIVE INGREDIENTS



Microlipids of Caffeine, Ivy, Laminaria Algae: lipolytic action, combating the unsightliness of cellulite, activating blood microcirculation and regulating capillary permeability. In microlipid form, they have a structure similar to cell membranes, extending their bioavailability and have a better absorption and diffusion over the skin.



Centella Asiatica (Centella asiatica leaf extract): Stimulates blood circulation, elasticizing action, draining. At the dermo-cosmetic level it carries out an adjuvant action in the treatment of cellulite imperfections.



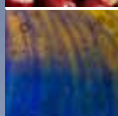
Green Tea: The extract consists mainly of polyphenols and xanthine bases (theophylline). Strong antioxidant properties that translate into a protective action at the level of microcirculation. Theophylline promotes lipolysis and drainage of excess fluids.



Fucus (Fucus vesiculosus extract): Promotes the exchange of liquids and has a reducing, toning, stimulating and anti-cellulite action.



Horse chestnut (Aesculus hippocastanum (Horse chestnut) seed extract): Has a redness-reducing, soothing, strengthening and vasoprotective action. Improves the microcirculation of the skin.



Liquid crystal emulsifier derived from olive oil: active ingredient-emulsifier derived from Olive Oil. It reintegrates the skin barrier, carries out a moisturising action and promotes the transfer of active ingredients.

hydracell

EMULSION FOR CELLULITE BLEMISHES

Fluid emulsion with a rich and silky texture for the body enriched with Green Tea, micro-lipids of Algae/Caffeine/Edera specific and adjuvant for the treatment of cellulite. It also contains Wheat Germ Oil and Sunflower Oil which have an emollient and protective action. Thanks to the special formulation with liquid crystals, the cream is quickly absorbed by the skin, carrying the active ingredients.



Cabin - Apply the specific emulsion on the body and massage until fully absorbed.



At home Apply the specific emulsion to the body and massage until fully absorbed.

STEPS FOR BLEMISHES CAUSED BY CELLULITE



- | | | | | | |
|---|-------------------------------------|---|-----------------------------------|---|------------------------------------|
| 1 | cleanmilk
Gentle cleanser | 2 | bodyscrub
Exfoliant | 3 | bodypowder
Enzyme powder |
| 4 | enzycell
Cell Activator | 5 | bodyserum
Firming serum | 6 | hydracell
Cell emulsion |

o'care
MILANO

Code **OC.BOD.012P**
500ml Net Wt.16.9 oz

Code **OC.BOD.011R**
200ml Net Wt.6.8 oz



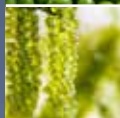
**BODY
LINE**
care for the skin of the body



ACTIVE INGREDIENTS



Peptides obtained from Pea Extract: concentrated in a peptide that helps protect and repair the proteins of the epidermis. Strengthens skin tone and elasticity. Fights the deterioration of the elastic fibres of the skin, maintaining the right toning in the areas treated. Tightens the tissues improving the toning and elasticity of the skin.



Marine Collagen (Soluble collagen): Gives support and resistance to the entire skin structure, carries out a compacting, moisturising, elasticising, protecting action and preventing skin ageing.



Liquid crystal emulsifier derived from olive oil: Active ingredient-emulsifier derived from Olive Oil. It reintegrates the skin barrier, carries out a moisturising action and promotes the transfer of active ingredients.



Horsetail (equisetum arvense extract): Thanks to its important content of mineral salts, it carries out a remineralising action, favouring the formation of elastic fibers.



Ivy (Hedera helix (Ivy) leaf/stem extract): Toning action on all parts of the body that tend to relax and lose tone.



Ginseng extract (Panax Ginseng root extract): revitalising, toning and microcirculation-stimulating action.

hydrakit

EMULSION AGAINST ATONY BLEMISHES

Fluid emulsion with a rich and silky texture for the body enriched with Peptides, Marine Collagen and Ginseng, it has an intensive elasticising and firming action. It also contains Wheat Germ Oil and Sunflower Oil, which exert an emollient and protective action. Thanks to the special formulation with liquid crystals, the cream is quickly absorbed by the skin, carrying the active ingredients.



Cabin - Apply the specific emulsion on the body and massage until fully absorbed.



At home - Apply the specific emulsion to the body and massage until fully absorbed.

STEPS FOR ATONY IMPERFECTIONS



- | | | | | | |
|---|-------------------------------------|---|-----------------------------------|---|------------------------------------|
| 1 | cleanmilk
Gentle cleanser | 2 | bodyscrub
Exfoliant | 3 | bodypowder
Enzyme powder |
| 4 | enzytone
Tone Activator | 5 | bodyserum
Firming serum | 6 | hydrakit
Tone emulsion |

o'care
MILANO

Code **OC.BOD.014P**
500ml Net Wt.16.9 oz

Code **OC.BOD.013R**
200ml Net Wt.6.8 oz



**BODY
LINE**
care for the skin of the body

