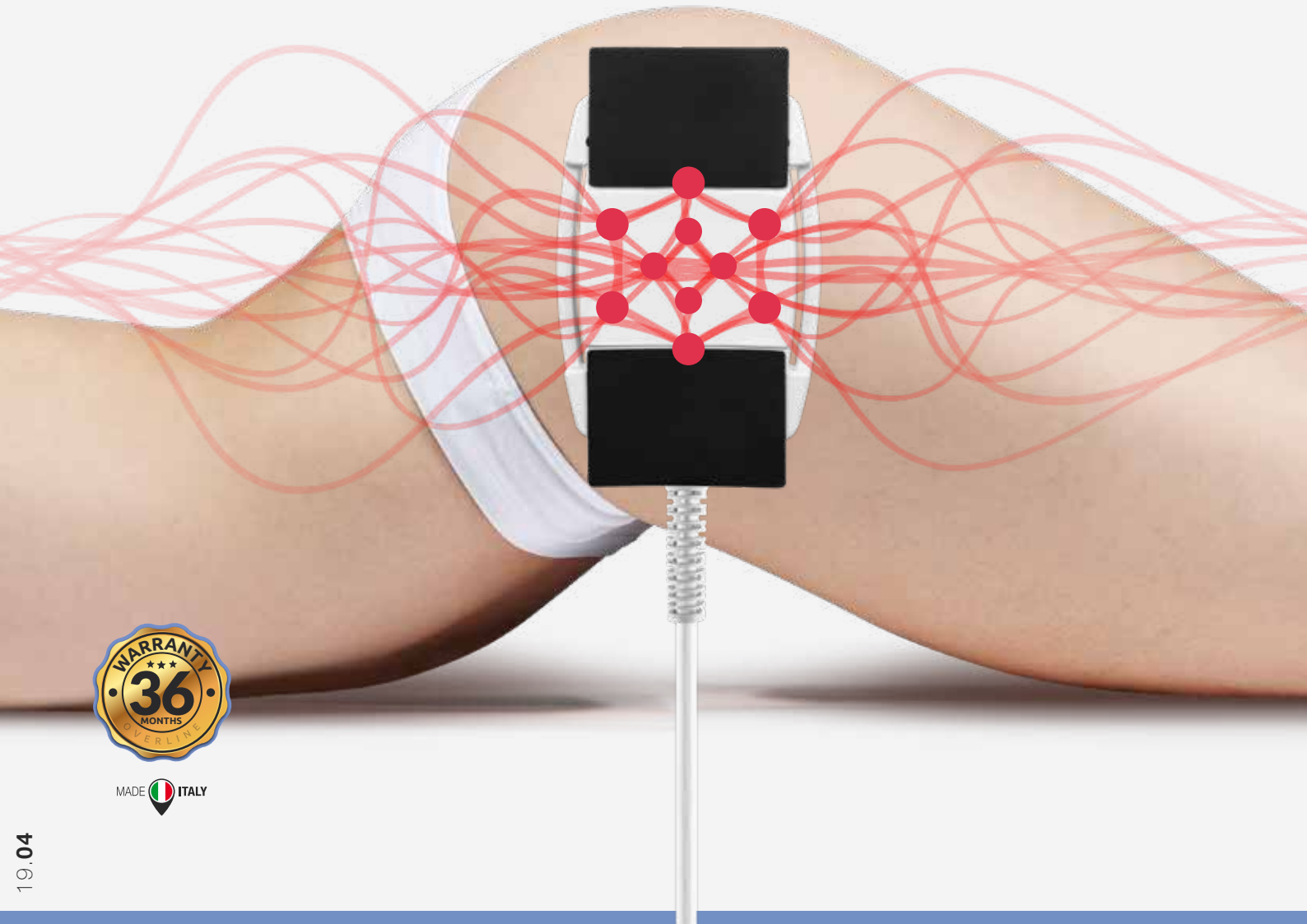


OVERLINE
ITALIA

LASER Precision
Stimulating & Reshaping



Infra**Laser** 980nm



INNOVATIVE, PAINLESS, SAFE AND HIGH-PERFORMING

InfraLaser 980nm

Xilia InfraLaser 980nm is a revolutionary device that uses Laser technology for slimming treatments, with a combination of energies capable of acting effectively on the most common imperfections affecting the beauty and harmony of your body shape. This equipment, which provides enveloping, complete and painless reshaping treatments, was developed in the Overline laboratories and is the result of numerous clinical studies proving its performance and safety, as well as of an in-depth ergonomic study of the synergistic plates, to make them easy to apply and to ensure best adhesion to the body's shape.

Xilia InfraLaser 980nm, through its 8 special plates, allows multiple areas of the body to be treated simultaneously for immediately visible results. The system allows synergistic intervention on imperfections with 4 routes that are divided into 16 different programs.

At the heart of the device, the software makes it intuitive and easy to use, able to guide and support the beautician in selecting the most suitable program for the person undergoing treatment and for the imperfections present.

cod. **Xilia752**

Dimensions mm L610 x D490 x H1210 - In L214.01 x D19.29 x H47.63



Memory Card 9465



The most advanced technologies combining 980 nm Laser action with the most efficient energies, for high-performance, customised and fast body treatment.

BODY LASER

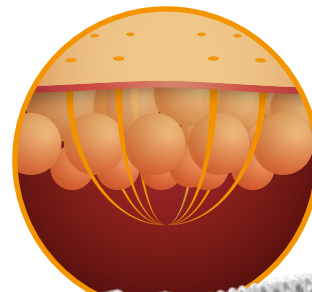
The 360-degree treatment for all most common body imperfections

SYNERGY WITH VISIBLE RESULTS

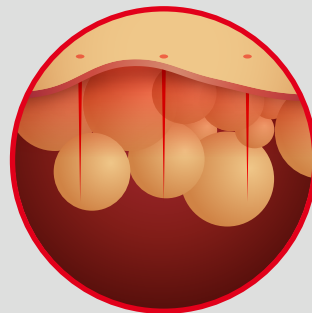
ELECTRO-SHAPING



ELECTRO-STIMULATION



LASER LLLT



ELECTRO-STIMULATION

We know that muscle is a metabolically active tissue and to keep it in ideal conditions a higher number of calories need to be burnt. Starting from this premise, the electrical activation triggered by Electro-stimulation promotes muscle tone, which in turn leads to increased basal metabolism. With more muscles you burn more calories, and this is good for your figure! Indeed, this particular exercise triggers the subsequent indirect weight loss process, because the resting metabolic rate has increased.

Studies on this have shown that said energy consumption takes place especially in the region that was most affected by the stimulation, because muscles, when in recovery phases, draw energy from subcutaneous tissue fat, encouraging localised slimming

ELECTRO-SCULPTING

The Electro-Sculpting causes an ionic shift that alters tissue permeability with a consequent increase in oxygen consumption and an improvement of the microcirculation.

This technology can reactivate all the areas in which fat accumulates, and is ideal to revitalise the cellulite areas with poor blood circulation.

Furthermore, triggering Electrolysis, Electro-Sculpting provides a beneficial effect also on skin texture, which will appear more toned, elastic and firm, with a net improvement in the "orange peel" appearance.





LLLT

Laser 980nm



80 emitters within the plates

Laser (LLLT) is increasingly used in body reshaping treatments because it promotes adipocyte metabolism with the consequent mobilization of intracellular lipids.

HOW IT WORKS

This technology stimulates the mitochondria of adipocytes, increasing the synthesis of adenosine triphosphate (ATP, the energy currency for any cellular activity), with subsequent regulation of cyclic adenosine monophosphate (cAMP). The increase in cAMP stimulates the cytoplasmic lipase enzyme, which converts triglycerides to fatty acids and glycerol, which can pass through the pores formed in the cellular membrane.

The combination of vibration with LLLT treatment provides greater stimulation of basal metabolism and muscular contraction. Furthermore, the vibrational effect has a toning effect on the skin. Various 980 nm Laser modulations allow photon energy to achieve their physiological objective in different ways, diversifying the biological response to LED.



The first part of an impulse can contain enough energy to result in the excitation of chromophore molecules of the upper surface layer, providing a “way in” to penetrate further into the tissue. Furthermore, greater collagen stimulation and production is obtained compared to continuous impulses.

ADVICE

A healthy and balanced lifestyle promotes correct metabolism and thus the burning of fats, allowing the effects of the treatment to be long-lasting.

LLLT CELL

CELL programs are conceived to work on the orange peel appearance typical of areas of cellulite. These programs use a particular form of wavelength with a “draining” effect, obtained thanks to the association of calibrated frequencies, which results in surface stimulation of muscles, allowing reabsorption of stagnant fluids.

The protocol entails use of **iSol. Beauty** bandages

- ISO.BE.115 **DRAIN ACTIVE** (draining effect)
- ISO.BE.125 **REDU CELL** (reducing effect)
- ISO.BE.120 **SLIM REDUCING** (slimming effect)

LLLT SLIM

SLIM programs stimulate red muscle fibres and their (aerobic) energy consumption to facilitate local metabolism. The energy fuel used to exercise is comprised of sugars and fats, through biochemical processes involving oxygen. Progressive increase in frequency generates actual work at the muscular level, promoting an increase in “effort”, improving vascularisation and capillarisation.

The protocol entails use of **iSol. Beauty** bandages

- ISO.BE.125 **REDU CELL** (reducing effect)
- ISO.BE.120 **SLIM REDUCING** (slimming effect)

LLLT DREN

DREN programs, specifically designed for imperfections caused by water retention and oedema, use a modulated square wave with frequencies aimed at stimulation of the movement of fluids, which, if associated with the specific Drain Active bandages, allows the objective to be achieved through perfect synergy.

The protocol entails use of **iSol. Beauty** bandages

- ISO.BE.115 **DRAIN ACTIVE** (draining effect)
- ISO.BE.125 **REDU CELL** (reducing effect)
- ISO.BE.120 **SILM REDUCING** (slimming effect)

LLLT TONE

TONE programs were conceived to obtain stimulation of intermediate muscle fibres, which, by nature, has mixed white and red fibre features. This stimulation promotes muscular tone, stimulates local metabolism and improves vascularisation and capillarisation.

The protocol entails use of **iSol. Beauty** bandages

ISO.BE.110 **TONE UP** (volumizing effect)

iSol.Beauty

BANDAGES: irreplaceable allies

The synergy between iSol.Beauty bandages and the treatments that you can perform with Xilia InfraLaser 980 nm, allows enhancement of beauty results.

iSol.Beauty offers 6 different bandages to tackle all the most common body imperfections with great effectiveness.





Enhance the benefits of Overline treatments



DRENA-TONE GEL
Conductive gel with toning reactivating effect
with Ginseng
ISO.TONE.200 - 1000ml / 33,8oz
(Cabin)



LIPO-CELL GEL
Conductive gel for cellulite and adiposity with
Guaranà and Green Tea
ISO.DREN.100 - 1000ml / 33,8oz
(Cabin)



DRAIN ACTIVE
Detox draining treatment
ISO.BE.115

TONE UP
Volume effect Treatment
ISO.BE.110

REDU CELL
Cellulite*reducing effect treatment
ISO.BE.125

SLIM REDUCING
Slimming effect treatment
ISO.BE.120

*imperfection due to cellulite



www.isolbeauty.it



TAKE CARE OF YOUR WORK DON'T WORRY ABOUT THE REST, OVERLINE IS THERE FOR YOU

Overline devices are guaranteed by defects in material and workmanship, ex-works, for a period of 36 months (excluded the accessories subject to wear) according to the General Conditions of Sale*

Overline is a Technology S.r.l. Brand, a company that has obtained 3 important international TÜV Rheinland certifications. These certifications attest that the production chain complies with international standards and standards for the production of biomedical, electro-aesthetic and cosmetic equipment, underlining how the excellence of Overline products is a competitive advantage for the beautician's work and for satisfaction and the tranquility of the end customer



MADE IN ITALY



Occupational Health and Safety Assessment Series
OHSAS 18001:2007

www.tuv.com
ID 9105082302



Quality Management System
ISO 9001:2015

www.tuv.com
ID 9105082302



Design, manufacture and service of electromedical devices
EN ISO 13485:2016

www.tuv.com
ID 9105082302

Overline reserves the right to make changes to the equipment described, at any time and without notice. Overline equipment is designed and programmed to obtain results on imperfections without passing the allowed aesthetic limit.

For further information please contact us at number **+371 2 5132866** or visit our website www.beautyequipment.lv

